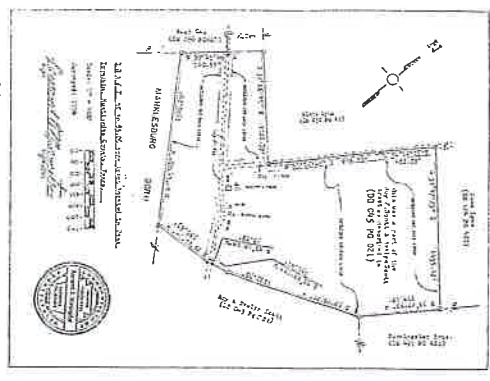


USGS The National Map, National Boundaries Database, 2019 Feature Regions, Geographic Names, Information System, National Hydrography Dataset, National Land Cover Database, National Surface Water Dataset, and National Transportation Dataset; USGS Global Ecoregions, US Census Bureau, 1:50,000 scale data; USGS Road data; National Earth Data, US Department of State/HILL/NOAA National Center for Environmental Information; Data referenced February, 2025



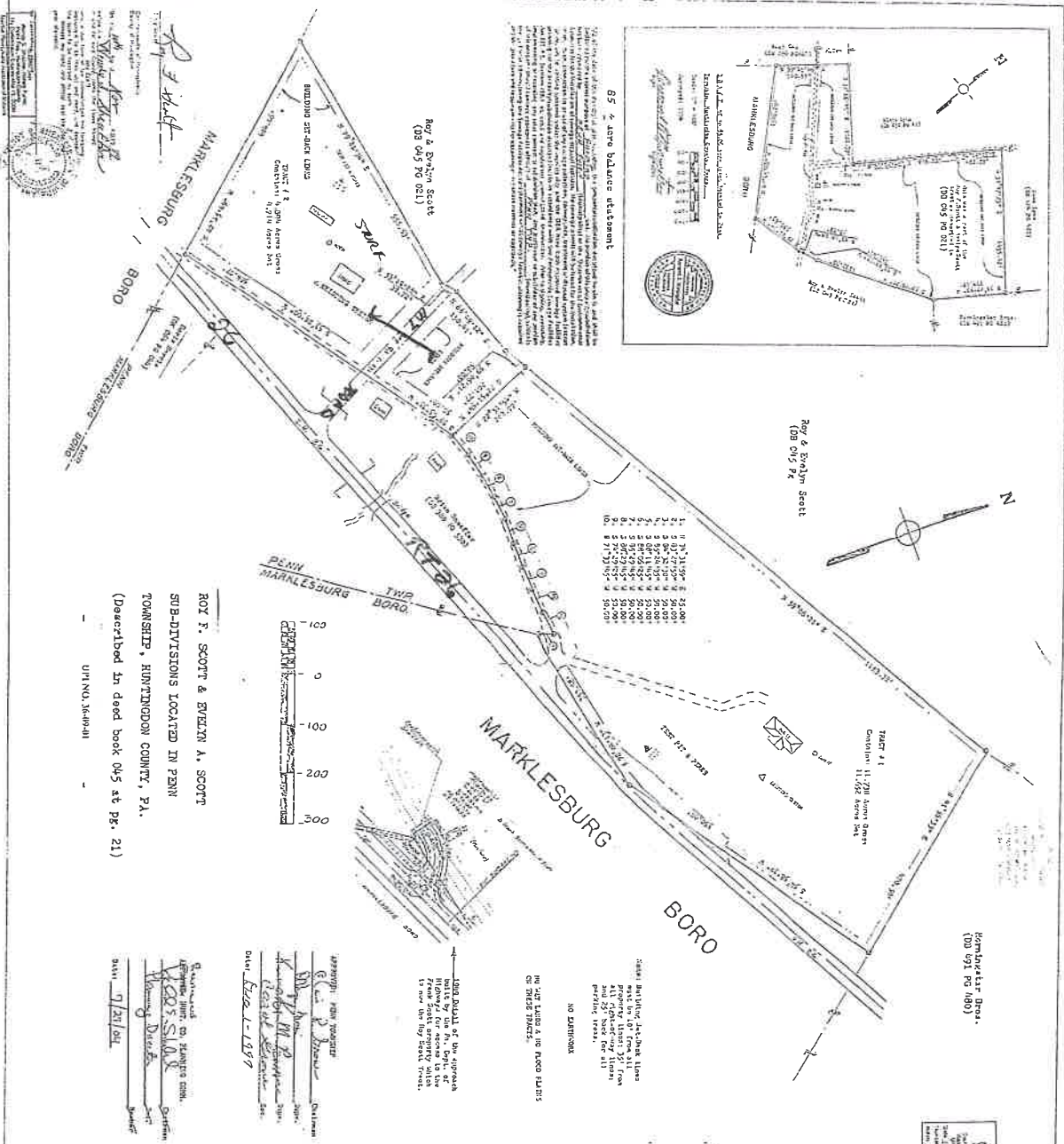
OUT PARCEL

2024-4393



65% area balance statement

1.	0° 31' 39"	55.000'
2.	0° 31' 39"	55.000'
3.	0° 31' 39"	55.000'
4.	0° 31' 39"	55.000'
5.	0° 31' 39"	55.000'
6.	0° 31' 39"	55.000'
7.	0° 31' 39"	55.000'
8.	0° 31' 39"	55.000'
9.	0° 31' 39"	55.000'
10.	0° 31' 39"	55.000'



ROY F. SCOTT & EVELYN A. SCOTT
 SUB-DIVISIONS LOCATED IN PENN
 TOWNSHIP, HUNTINGDON COUNTY, PA.
 (Described in deed book 045 at pg. 21)
 UPL NO. 1404041

APPROVED FOR RECORDATION
 BY THE REGISTER OF DEEDS
 HUNTINGDON COUNTY, PENN.
 DATE: 7/21/04

