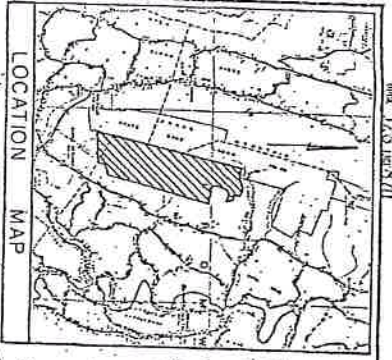


USGS The National Map: National Boundaries Dataset, 3DEP Elevation System, National Hydrography Dataset, National Land Cover Database Transportation Dataset; USGS Global Ecosystems; U.S. Census Bureau Earth Data; U.S. Department of State HIU; NOAA National Centers for



TRACT 26

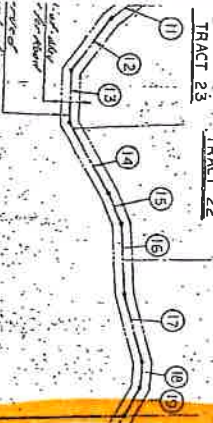
TRACT 25

TRACT 24

TRACT 23

TRACT 21

90.97 AC.

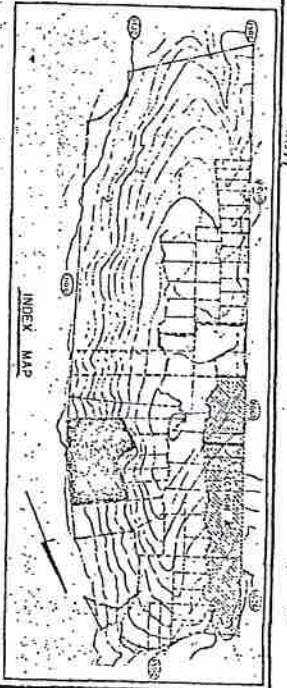


TRACT 20

TRACT 21-A

TRACT 22

TRACT 23



TRACT DESCRIPTION

1	1.00 AC.	1.00 AC.
2	1.00 AC.	1.00 AC.
3	1.00 AC.	1.00 AC.
4	1.00 AC.	1.00 AC.
5	1.00 AC.	1.00 AC.
6	1.00 AC.	1.00 AC.
7	1.00 AC.	1.00 AC.
8	1.00 AC.	1.00 AC.
9	1.00 AC.	1.00 AC.
10	1.00 AC.	1.00 AC.
11	1.00 AC.	1.00 AC.
12	1.00 AC.	1.00 AC.
13	1.00 AC.	1.00 AC.
14	1.00 AC.	1.00 AC.
15	1.00 AC.	1.00 AC.
16	1.00 AC.	1.00 AC.
17	1.00 AC.	1.00 AC.
18	1.00 AC.	1.00 AC.
19	1.00 AC.	1.00 AC.
20	1.00 AC.	1.00 AC.
21	1.00 AC.	1.00 AC.
22	1.00 AC.	1.00 AC.
23	1.00 AC.	1.00 AC.
24	1.00 AC.	1.00 AC.
25	1.00 AC.	1.00 AC.
26	1.00 AC.	1.00 AC.

*Supplies  
along w/ substrate  
Block 9  
David B. L. [Signature]*

NOTES

- Scale: 1" = 200'
- All corners are marked with iron stakes unless otherwise noted.
- The existing right-of-way follows the centerline of the highway roadway.

*Land that is currently Church is being as free*

DRAFT OF TRACT 21 SECTION B  
OF  
LAUREL MOUNTAIN TREE FARM FOR  
D&L A PARTNERSHIP  
CHOPWELL TWP HUNTINGDON CO. PA. ENGINEERING CONSULTANTS

ASSAUX - HEMSLEY, INC.  
50 N. SECOND ST  
DIAMONDRIDGE, PA. 17201

DESIGN BY	CAD	DATE	8-26-75
CHECKED BY	CAD	FILE	47-46-G
APPROVED BY	MJR	SCALE	1" = 200'

