

Little Valley Rd
SR 3001

Dudley Rd
SR 3016

SR 3017

Sugar Run Rd
SR 3023

Cooks Rd
SR 3018

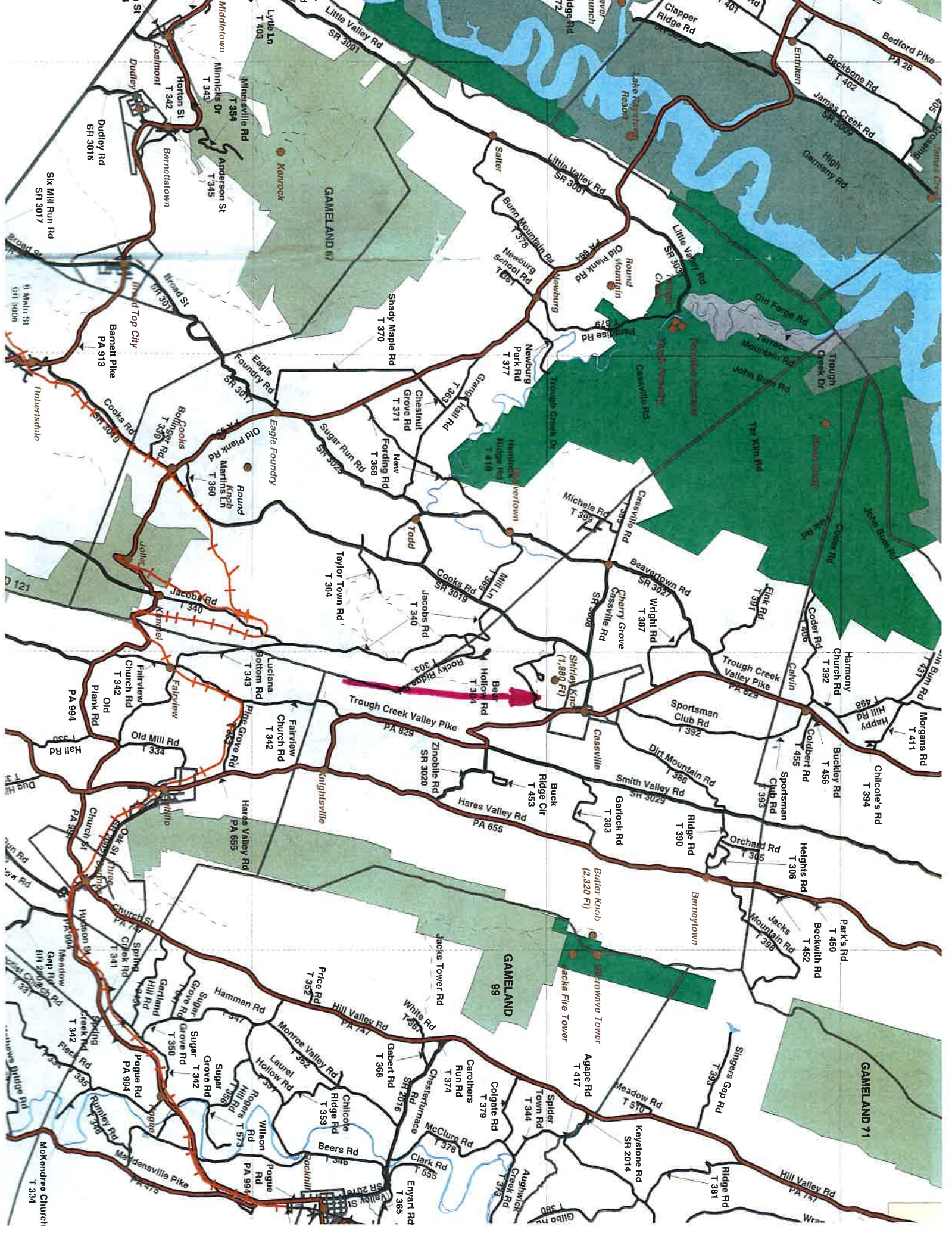
Trough Creek Valley Pike
PA 629

Hares Valley Rd
PA 655

White Rd
T 367

Monroe Valley Rd
PA 747

Clark Rd
SR 2014



Little Valley Rd
SR 3001

Dudley Rd
SR 3016

SR 3017

Sugar Run Rd
SR 3023

Cooks Rd
SR 3018

Trough Creek Valley Pike
PA 629

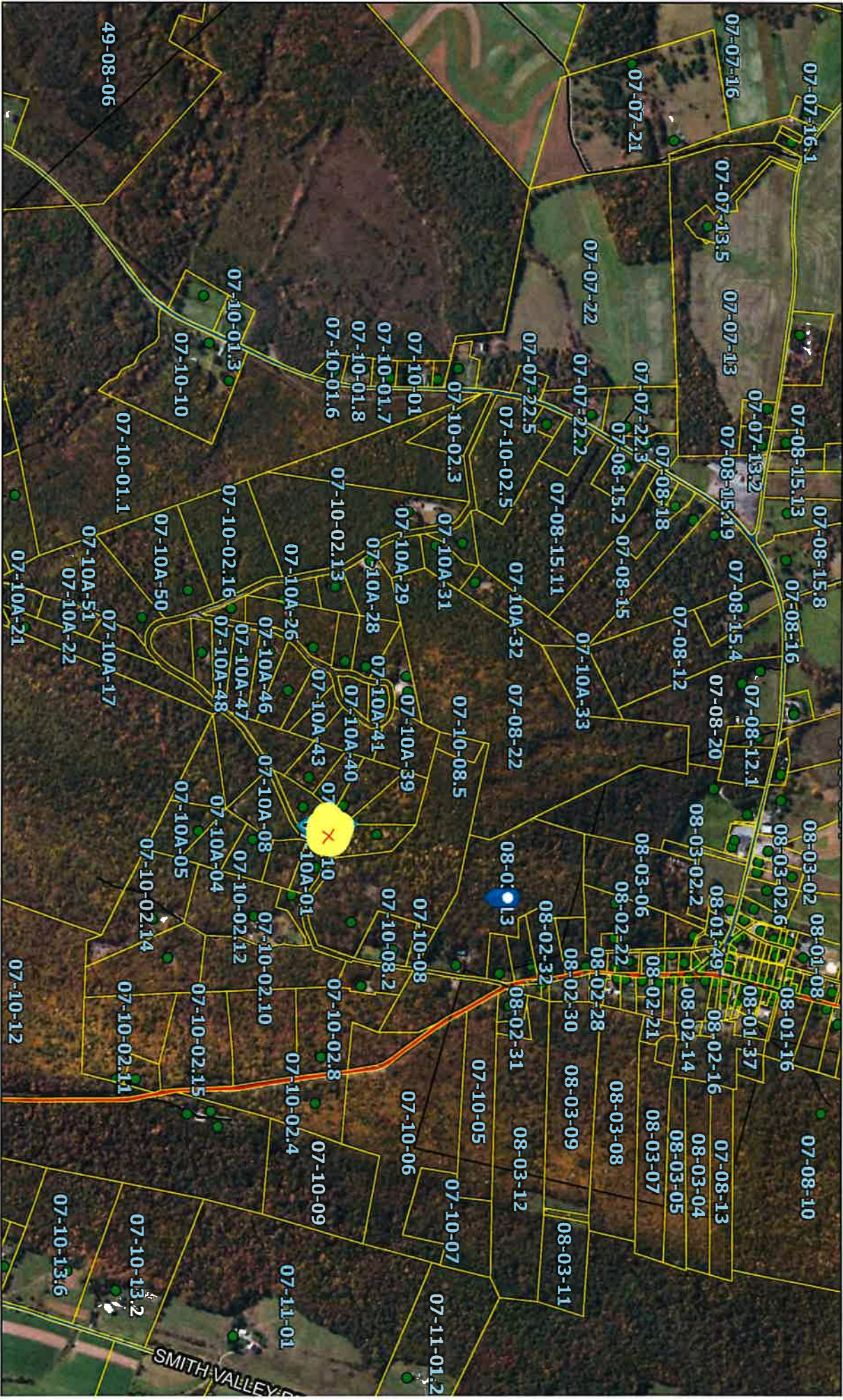
Hares Valley Rd
PA 655

White Rd
T 367

Monroe Valley Rd
PA 747

Clark Rd
SR 2014

7283 SHIRLEYS KNOB_2



8/27/2024, 3:56:28 PM

Tax Parcels

Municipal Boundaries

Structures

Roads

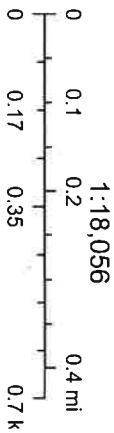
Federal

State

Township

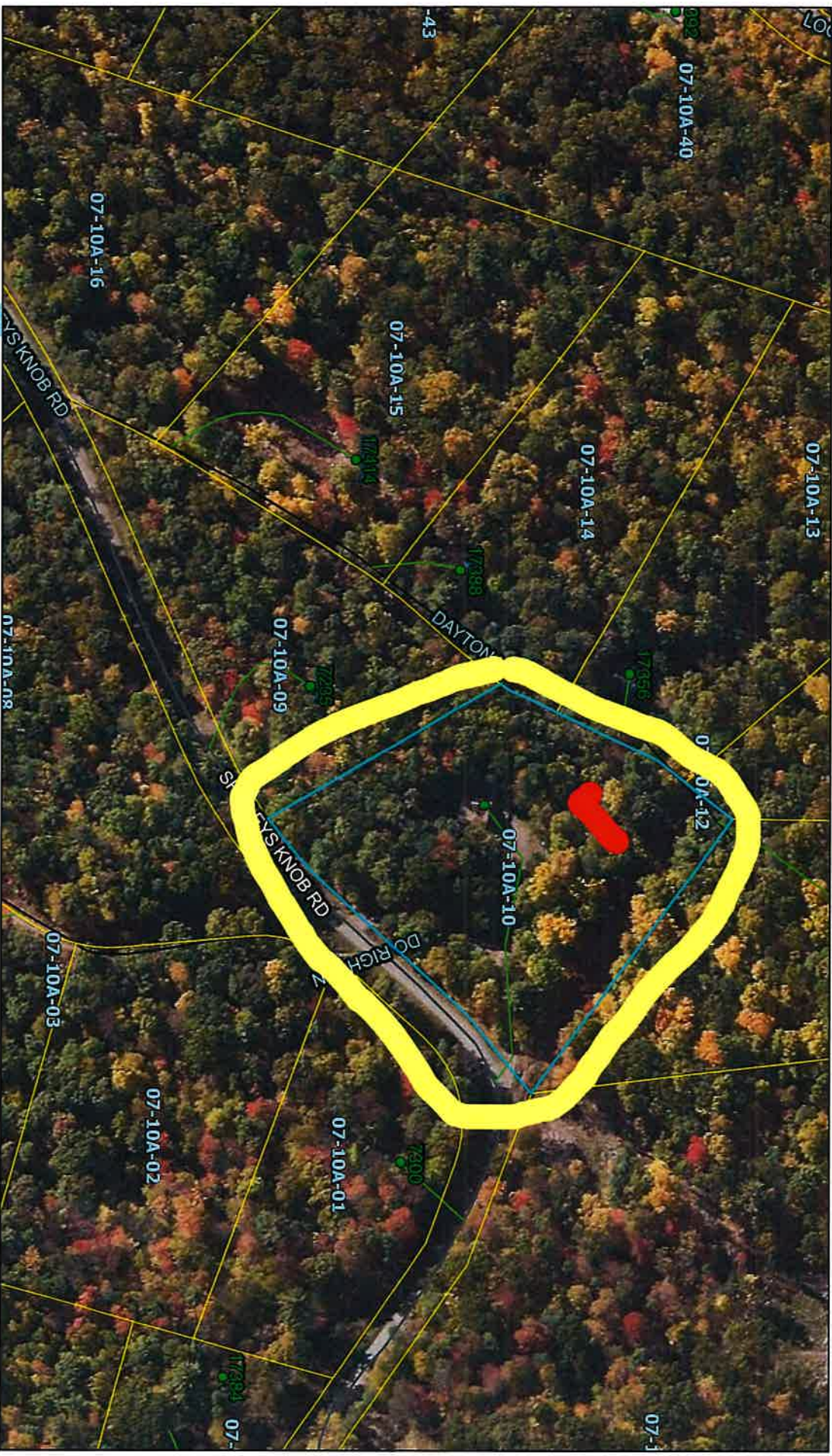
Borough

Private



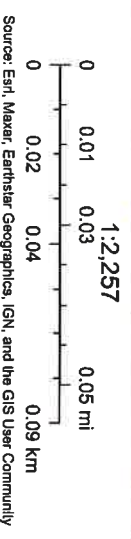
Source: Esri, Maxar, Earthstar Geographics, IGN, and the GIS User

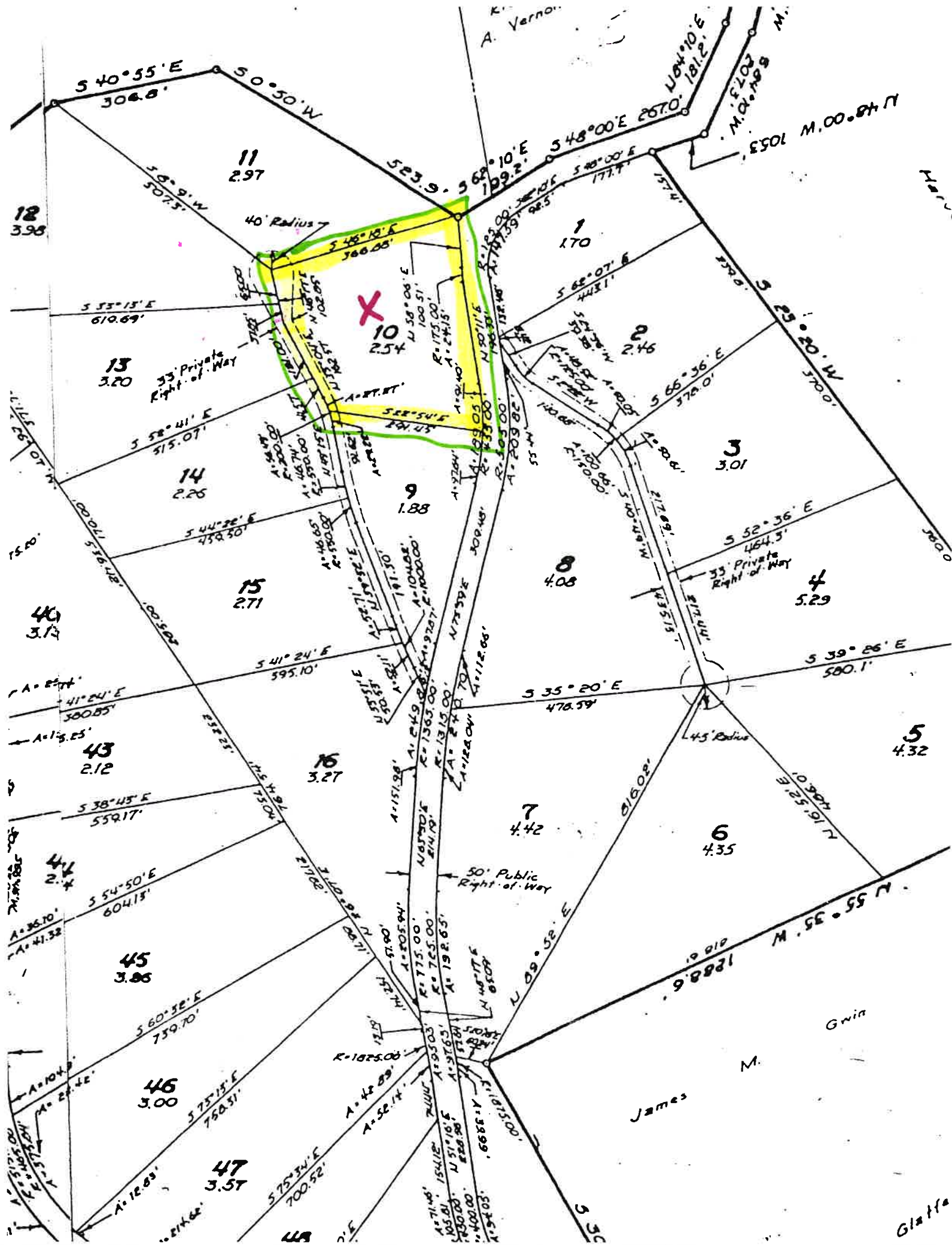
7283 SHIRLEYS KNOB



8/27/2024, 3:41:48 PM

- Tax Parcels
- Structures
- Access Lines
- Roads
- Municipal Boundaries
- Township
- Private





12
3.98

11
2.97

1
1.70

13
3.20

10
2.54

2
2.46

14
2.26

9
1.88

3
3.01

40
3.13

15
2.71

8
4.08

4
5.29

43
2.12

16
3.27

7
4.42

5
4.32

44
2.44

45
3.86

6
4.35

46
3.00

47
3.57

James M.

Gwin

Glatte

A. Vernor

35 Private Right of Way

35 Private Right of Way

50 Public Right of Way

S 40° 55' E 306.8'
S 0° 50' W

S 62° 10' E 199.2'
S 48° 00' E 267.0'

N 04° 10' E 181.2'
M. 0° 10' 9 M.
S 50° 00' E 105.3'
M. 00° 04' N

S 53° 15' E 610.69'

S 58° 41' E 515.07'

S 44° 26' E 459.50'

S 41° 24' E 595.10'

S 41° 24' E 380.85'

S 38° 45' E 559.17'

S 54° 50' E 604.15'

S 60° 38' E 759.70'

S 75° 15' E 750.51'

S 75° 30' E 700.52'

S 35° 20' E 478.59'

S 39° 26' E 580.1'

N 09° 52' E

N 55° 35' W 1288.6'
M. 55° 55' N

40 Radius

45 Radius

X

SEE 54° E 24.15'

S 58° 06' E 100.51'
A = 175.00'
R = 24.15'

S 58° 06' E 100.51'
A = 175.00'
R = 24.15'

S 58° 06' E 100.51'
A = 175.00'
R = 24.15'

S 58° 06' E 100.51'
A = 175.00'
R = 24.15'

S 58° 06' E 100.51'
A = 175.00'
R = 24.15'

S 58° 06' E 100.51'
A = 175.00'
R = 24.15'

S 58° 06' E 100.51'
A = 175.00'
R = 24.15'

S 58° 06' E 100.51'
A = 175.00'
R = 24.15'

S 58° 06' E 100.51'
A = 175.00'
R = 24.15'

S 58° 06' E 100.51'
A = 175.00'
R = 24.15'

S 58° 06' E 100.51'
A = 175.00'
R = 24.15'

S 58° 06' E 100.51'
A = 175.00'
R = 24.15'

