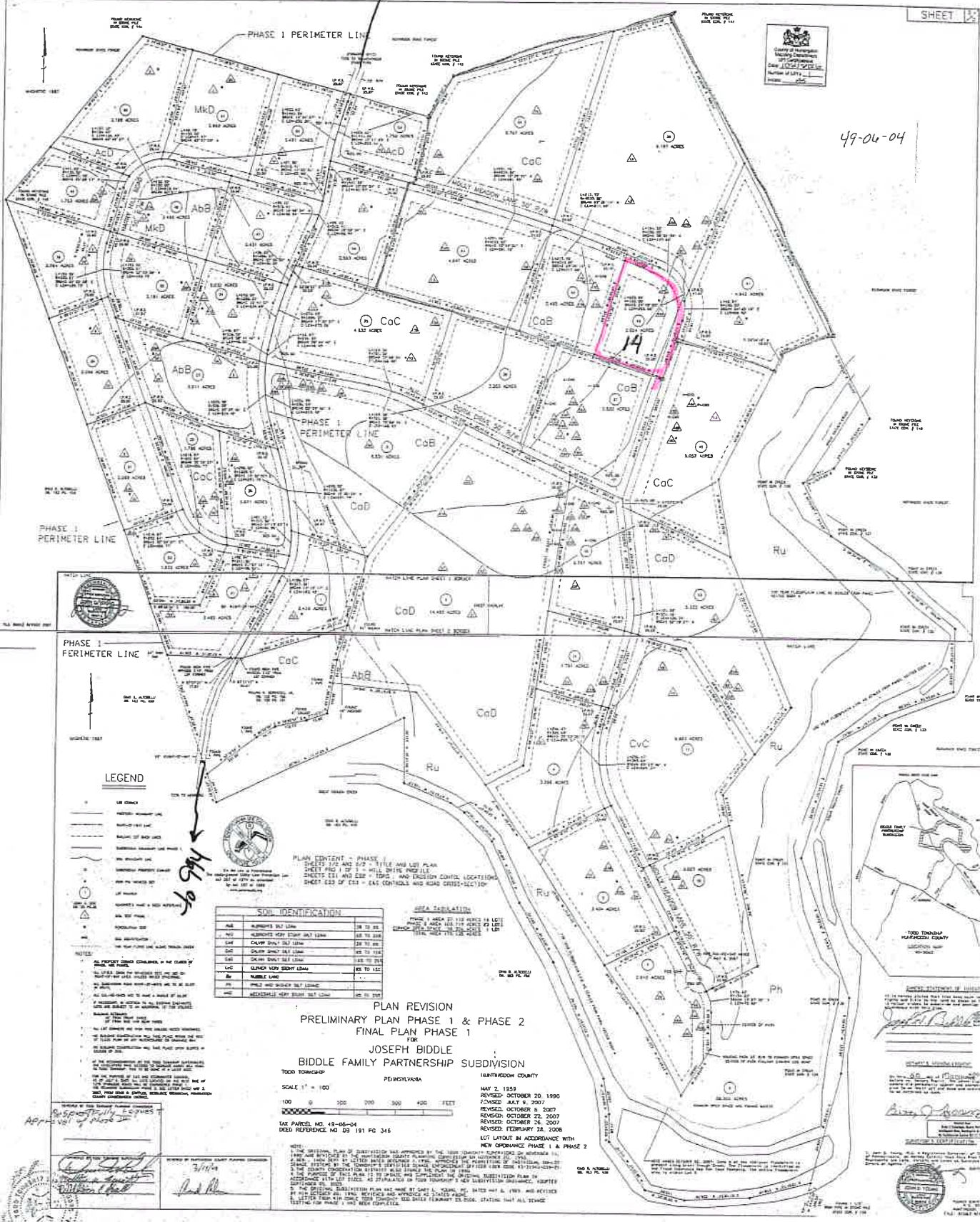


TO STATE
PARK

49-06-04



PHASE I PERIMETER LINE

LEGEND

- Solid line: LOT BOUNDARY
- Dashed line: UNDEVELOPED LOT
- Dotted line: BOUNDARY OF ROAD LOTS
- Thick dashed line: SUBDIVISION BOUNDARY
- Thin solid line: WALKWAY
- Thin dashed line: INTERIM PROPOSED ROAD
- Thin dotted line: INTERIM PROPOSED DRIVE
- Thin dash-dot line: INTERIM PROPOSED SIDEWALK
- Thin long-dash-dot line: INTERIM PROPOSED TRAIL
- Thin long-dash-dot-dot line: INTERIM PROPOSED FENCE
- Thin long-dash-dot-dot-dot line: INTERIM PROPOSED UTILITY
- Thin long-dash-dot-dot-dot-dot line: INTERIM PROPOSED EASEMENT
- Thin long-dash-dot-dot-dot-dot-dot line: INTERIM PROPOSED EASEMENT
- Thin long-dash-dot-dot-dot-dot-dot-dot line: INTERIM PROPOSED EASEMENT
- Thin long-dash-dot-dot-dot-dot-dot-dot-dot line: INTERIM PROPOSED EASEMENT
- Thin long-dash-dot-dot-dot-dot-dot-dot-dot-dot line: INTERIM PROPOSED EASEMENT
- Thin long-dash-dot-dot-dot-dot-dot-dot-dot-dot-dot line: INTERIM PROPOSED EASEMENT
- Thin long-dash-dot-dot-dot-dot-dot-dot-dot-dot-dot-dot line: INTERIM PROPOSED EASEMENT
- Thin long-dash-dot-dot-dot-dot-dot-dot-dot-dot-dot-dot-dot line: INTERIM PROPOSED EASEMENT
- Thin long-dash-dot-dot-dot-dot-dot-dot-dot-dot-dot-dot-dot-dot line: INTERIM PROPOSED EASEMENT
- Thin long-dash-dot-dot-dot-dot-dot-dot-dot-dot-dot-dot-dot-dot-dot line: INTERIM PROPOSED EASEMENT



PLAN CONTENT - PHASE I
 SHEETS 1/2 AND 5/2 - TITLE AND LOT PLAN
 SHEETS 1/3 AND 5/3 - ALL UTILITIES PROFILES
 SHEETS 2/1 AND 2/2 - TIE-IN AND LOCATION CONTROL LOCATIONS
 SHEET 2/3 OF 2/3 - (S1, C1) CONTROL AND ROAD CROSS-SECTION

SOIL IDENTIFICATION		
AW	ALHENTON'S 2ND CLASS	28 TO 25
AW	ALHENTON'S 2ND CLASS	25 TO 20
AW	ALHENTON'S 2ND CLASS	20 TO 15
AW	ALHENTON'S 2ND CLASS	15 TO 10
AW	ALHENTON'S 2ND CLASS	10 TO 5
AW	ALHENTON'S 2ND CLASS	5 TO 0

DETAILED IDENTIFICATION		
AW	ALHENTON'S 2ND CLASS	28 TO 25
AW	ALHENTON'S 2ND CLASS	25 TO 20
AW	ALHENTON'S 2ND CLASS	20 TO 15
AW	ALHENTON'S 2ND CLASS	15 TO 10
AW	ALHENTON'S 2ND CLASS	10 TO 5
AW	ALHENTON'S 2ND CLASS	5 TO 0

PLAN REVISION
PRELIMINARY PLAN PHASE I & PHASE 2
FINAL PLAN PHASE I
JOSEPH BIDDLE
BIDDLE FAMILY PARTNERSHIP SUBDIVISION
1000 TOWNSHIP
PERINNSYLVANIA
ISANTHEDON COUNTY

SCALE 1" = 100'
 0 100 200 300 400 FEET

TAX PARCEL NO. 49-06-04
 DEED REFERENCE NO. 191 PG. 345

MAY 2, 1999
 REVISED: OCTOBER 20, 1990
 FORWAS: JULY 9, 2007
 REVISED: OCTOBER 9, 2007
 REVISED: OCTOBER 22, 2007
 REVISED: OCTOBER 26, 2007
 REVISED: FEBRUARY 28, 2008
 LOT LAYOUT IN ACCORDANCE WITH
 NEW ORDINANCE PHASE I & PHASE 2

NOTES:
 THE ORIGINAL PLAN OF SUBDIVISION WAS APPROVED BY THE BOARD OF SUPERVISORS OF ISANTHEDON COUNTY, PENNSYLVANIA, ON MAY 2, 1999 AND RE-REVISED BY THE BOARD OF SUPERVISORS OF ISANTHEDON COUNTY, PENNSYLVANIA, ON OCTOBER 20, 1990.
 THIS PLAN WAS REVISED TO SHOW THE PROPOSED PHASING OF THIS SUBDIVISION. THE PHASING OF THIS PLAN IS SUBJECT TO THE PHASING OF THE PHASE I & PHASE 2 SUBDIVISION.
 THE PHASING OF THIS PLAN IS SUBJECT TO THE PHASING OF THE PHASE I & PHASE 2 SUBDIVISION.
 THE PHASING OF THIS PLAN IS SUBJECT TO THE PHASING OF THE PHASE I & PHASE 2 SUBDIVISION.
 THE PHASING OF THIS PLAN IS SUBJECT TO THE PHASING OF THE PHASE I & PHASE 2 SUBDIVISION.

Respectfully,
Joseph Biddle

3/1/04



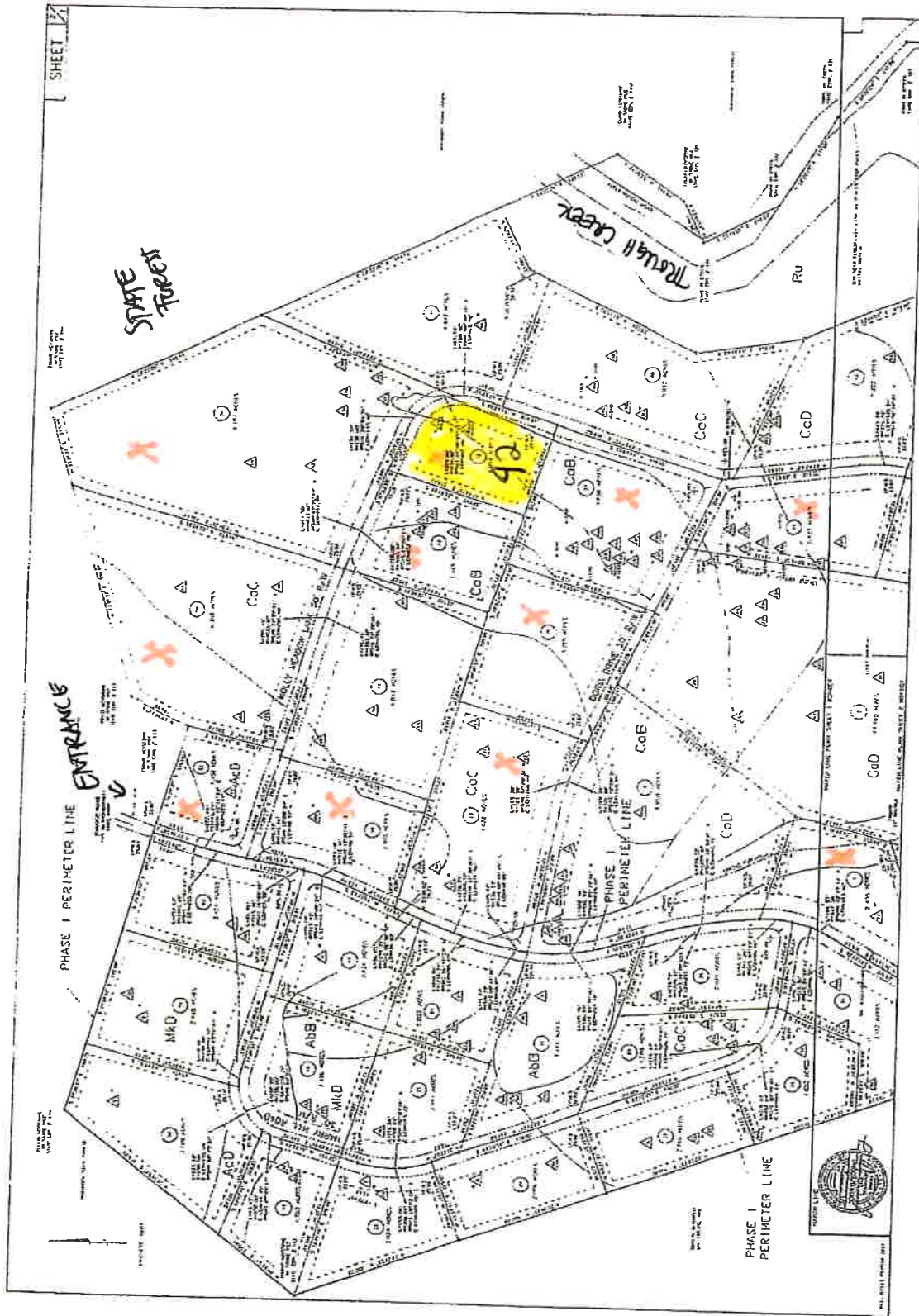
STATEMENT OF WORK
 I, the undersigned, have prepared this plan in accordance with the provisions of the Act of June 25, 1937 (P.L. 1001, Act 319) and the Act of March 27, 1953 (P.L. 202, Act 35). I am a duly Licensed Professional Engineer in the State of Pennsylvania.

Joseph Biddle

OFFICIAL STATEMENT OF WORK
 I, the undersigned, have prepared this plan in accordance with the provisions of the Act of June 25, 1937 (P.L. 1001, Act 319) and the Act of March 27, 1953 (P.L. 202, Act 35). I am a duly Licensed Professional Engineer in the State of Pennsylvania.

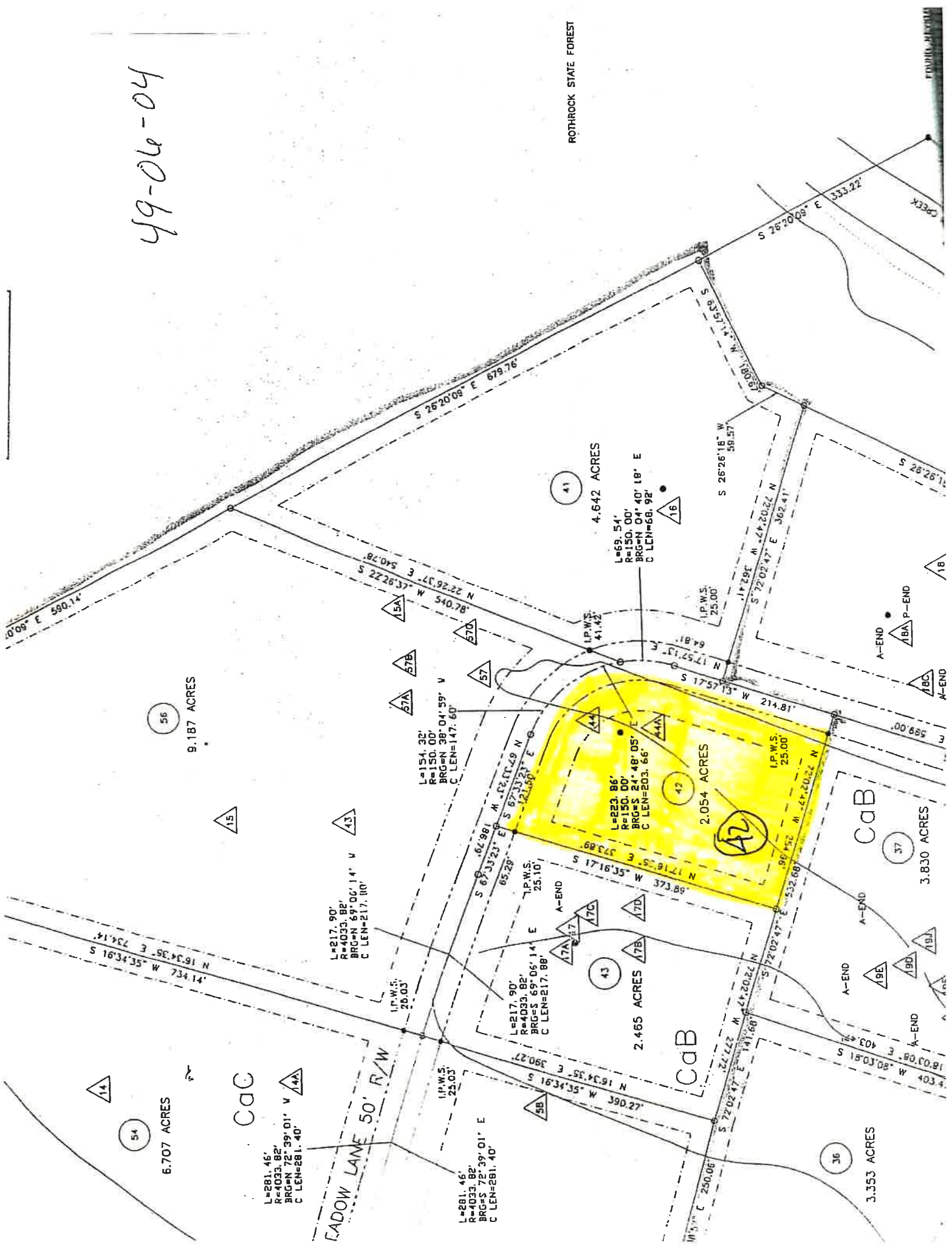
Joseph Biddle





49-06-04

ROTHROCK STATE FOREST



6.707 ACRES

CAC

L=281.45'
 R=4033.82'
 BRG=N 72°39'01" V
 C LEN=281.40'

CADOW LANE 50' R/W

L=281.45'
 R=4033.82'
 BRG=S 72°39'01" E
 C LEN=281.40'

CaB

2.465 ACRES

L=217.90'
 R=4033.82'
 BRG=S 69°06'14" E
 C LEN=217.88'

CaB

3.830 ACRES

2.054 ACRES

L=223.86'
 R=150.00'
 BRG=S 24°48'05" E
 C LEN=203.66'

4.642 ACRES

L=69.54'
 R=150.00'
 BRG=N 04°40'18" E
 C LEN=68.92'

9.187 ACRES

56

3.353 ACRES

36

A-END

ABC

A-END

A-END

A-END

A-END

A-END

A-END

PAULINE, MISSOURI