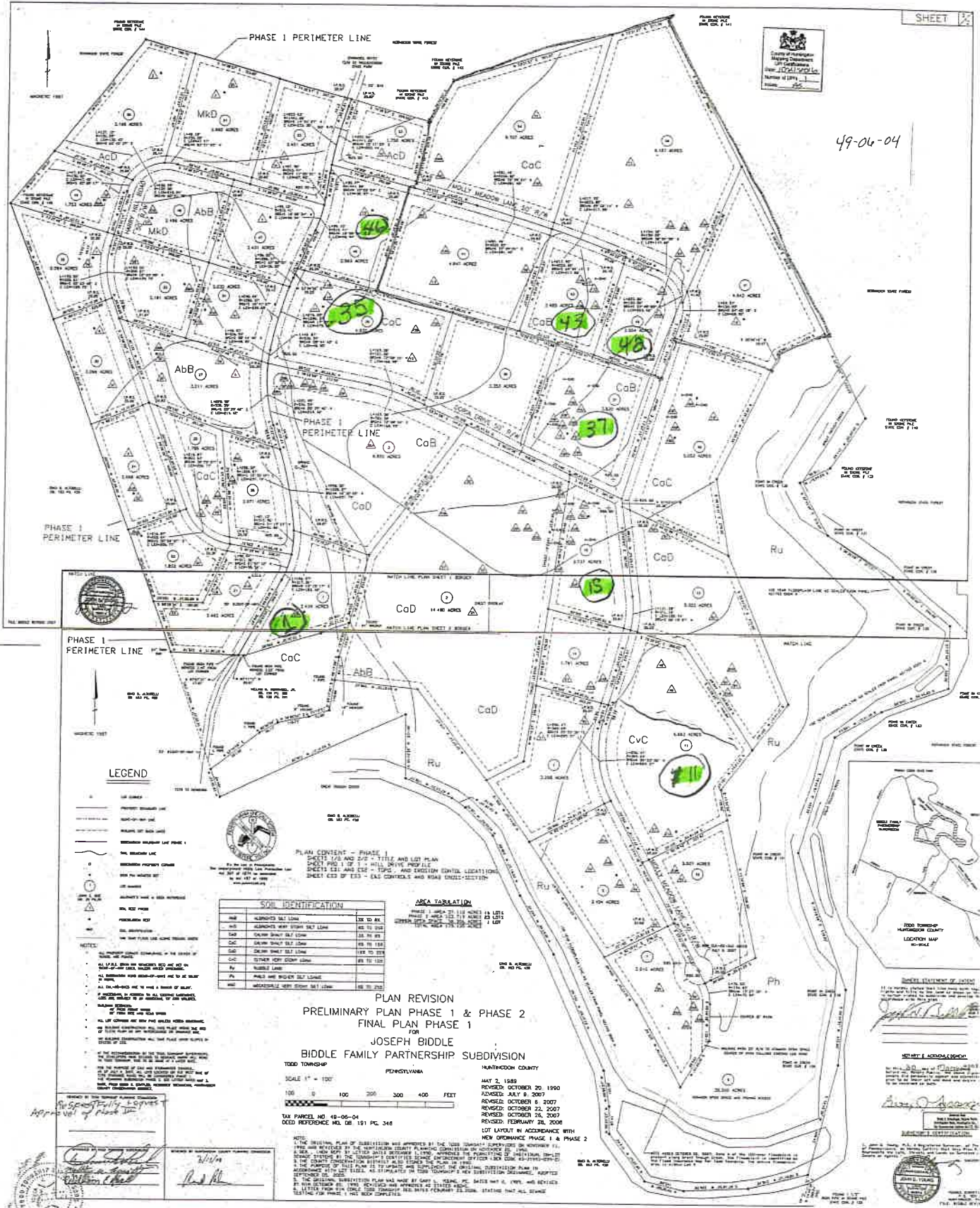


Lot Number	Acres	Price
1	2.436	\$60,000.00
11 (creek)	4.663	\$115,000.00
15	2.737	\$65,000.00
35	4.632	\$80,000.00
36	3.353	\$75,000.00
37	3.83	\$80,000.00
42	2.054	\$48,000.00
43	2.465	\$60,000.00
46	2.593	\$60,000.00
54 (borders SF)	6.707	\$130,000.00
56 (borders SF)	9.187	\$180,000.00

49-06-04



LEGEND

- UNIMPROVED LOT
- IMPROVED LOT
- PHASE 1 PERIMETER LINE
- PHASE 2 PERIMETER LINE
- PHASE 3 PERIMETER LINE
- PHASE 4 PERIMETER LINE
- PHASE 5 PERIMETER LINE
- PHASE 6 PERIMETER LINE
- PHASE 7 PERIMETER LINE
- PHASE 8 PERIMETER LINE
- PHASE 9 PERIMETER LINE
- PHASE 10 PERIMETER LINE
- PHASE 11 PERIMETER LINE
- PHASE 12 PERIMETER LINE
- PHASE 13 PERIMETER LINE
- PHASE 14 PERIMETER LINE
- PHASE 15 PERIMETER LINE
- PHASE 16 PERIMETER LINE
- PHASE 17 PERIMETER LINE
- PHASE 18 PERIMETER LINE
- PHASE 19 PERIMETER LINE
- PHASE 20 PERIMETER LINE
- PHASE 21 PERIMETER LINE
- PHASE 22 PERIMETER LINE
- PHASE 23 PERIMETER LINE
- PHASE 24 PERIMETER LINE
- PHASE 25 PERIMETER LINE
- PHASE 26 PERIMETER LINE
- PHASE 27 PERIMETER LINE
- PHASE 28 PERIMETER LINE
- PHASE 29 PERIMETER LINE
- PHASE 30 PERIMETER LINE
- PHASE 31 PERIMETER LINE
- PHASE 32 PERIMETER LINE
- PHASE 33 PERIMETER LINE
- PHASE 34 PERIMETER LINE
- PHASE 35 PERIMETER LINE
- PHASE 36 PERIMETER LINE
- PHASE 37 PERIMETER LINE
- PHASE 38 PERIMETER LINE
- PHASE 39 PERIMETER LINE
- PHASE 40 PERIMETER LINE
- PHASE 41 PERIMETER LINE
- PHASE 42 PERIMETER LINE
- PHASE 43 PERIMETER LINE
- PHASE 44 PERIMETER LINE
- PHASE 45 PERIMETER LINE
- PHASE 46 PERIMETER LINE
- PHASE 47 PERIMETER LINE
- PHASE 48 PERIMETER LINE
- PHASE 49 PERIMETER LINE
- PHASE 50 PERIMETER LINE
- PHASE 51 PERIMETER LINE
- PHASE 52 PERIMETER LINE
- PHASE 53 PERIMETER LINE
- PHASE 54 PERIMETER LINE
- PHASE 55 PERIMETER LINE
- PHASE 56 PERIMETER LINE
- PHASE 57 PERIMETER LINE
- PHASE 58 PERIMETER LINE
- PHASE 59 PERIMETER LINE
- PHASE 60 PERIMETER LINE
- PHASE 61 PERIMETER LINE
- PHASE 62 PERIMETER LINE
- PHASE 63 PERIMETER LINE
- PHASE 64 PERIMETER LINE
- PHASE 65 PERIMETER LINE
- PHASE 66 PERIMETER LINE
- PHASE 67 PERIMETER LINE
- PHASE 68 PERIMETER LINE
- PHASE 69 PERIMETER LINE
- PHASE 70 PERIMETER LINE
- PHASE 71 PERIMETER LINE
- PHASE 72 PERIMETER LINE
- PHASE 73 PERIMETER LINE
- PHASE 74 PERIMETER LINE
- PHASE 75 PERIMETER LINE
- PHASE 76 PERIMETER LINE
- PHASE 77 PERIMETER LINE
- PHASE 78 PERIMETER LINE
- PHASE 79 PERIMETER LINE
- PHASE 80 PERIMETER LINE
- PHASE 81 PERIMETER LINE
- PHASE 82 PERIMETER LINE
- PHASE 83 PERIMETER LINE
- PHASE 84 PERIMETER LINE
- PHASE 85 PERIMETER LINE
- PHASE 86 PERIMETER LINE
- PHASE 87 PERIMETER LINE
- PHASE 88 PERIMETER LINE
- PHASE 89 PERIMETER LINE
- PHASE 90 PERIMETER LINE
- PHASE 91 PERIMETER LINE
- PHASE 92 PERIMETER LINE
- PHASE 93 PERIMETER LINE
- PHASE 94 PERIMETER LINE
- PHASE 95 PERIMETER LINE
- PHASE 96 PERIMETER LINE
- PHASE 97 PERIMETER LINE
- PHASE 98 PERIMETER LINE
- PHASE 99 PERIMETER LINE
- PHASE 100 PERIMETER LINE



PLAN CONVENT - PHASE 1
SHEET 1 OF 2 AND 2 OF 2 - TITLE AND LOT PLAN
SHEETS 1 OF 2 - 1/4" HORIZ. SCALE
SHEETS 2 OF 2 - 1/4" HORIZ. SCALE
SHEETS 3 OF 2 - 1/4" HORIZ. SCALE
SHEETS 4 OF 2 - 1/4" HORIZ. SCALE

SOIL IDENTIFICATION	
AbB	APPROXIMATE SOIL
CaC	APPROXIMATE SOIL
CaB	APPROXIMATE SOIL
CaD	APPROXIMATE SOIL
Ru	APPROXIMATE SOIL
Cvc	APPROXIMATE SOIL
Ph	APPROXIMATE SOIL

AREA TABULATION	
AbB	1.14 ACRES
CaC	1.14 ACRES
CaB	1.14 ACRES
CaD	1.14 ACRES
Ru	1.14 ACRES
Cvc	1.14 ACRES
Ph	1.14 ACRES

PLAN REVISION
PRELIMINARY PLAN PHASE 1 & PHASE 2
FINAL PLAN PHASE 1
FOR
JOSEPH BIDDLE
BIDDLE FAMILY PARTNERSHIP SUBDIVISION

TODD TOWNSHIP
PENNSYLVANIA
SCALE 1" = 100'
100 200 300 400 FEET

TAX PARCEL NO 49-06-04
DEED REFERENCE MD DB 191 FC 348

MAY 2, 1989
REVISED OCTOBER 20, 1990
REVISED JULY 9, 2007
REVISED OCTOBER 6, 2007
REVISED OCTOBER 22, 2007
REVISED OCTOBER 24, 2009
REVISED FEBRUARY 28, 2008

LOT LAYOUT IN ACCORDANCE WITH
NEW ORDINANCE PHASE 1 & PHASE 2

NOTE:
1. THE ORIGINAL PLAN OF SUBDIVISION WAS APPROVED BY THE TOWNSHIP SUPERVISORS ON NOVEMBER 11, 1988 AND REVISOR BY THE PENNSYLVANIA PLANNING COMMISSION ON NOVEMBER 11, 1988.
2. THE ORIGINAL PLAN OF SUBDIVISION WAS APPROVED BY THE TOWNSHIP SUPERVISORS ON NOVEMBER 11, 1988 AND REVISOR BY THE PENNSYLVANIA PLANNING COMMISSION ON NOVEMBER 11, 1988.
3. THE ORIGINAL PLAN OF SUBDIVISION WAS APPROVED BY THE TOWNSHIP SUPERVISORS ON NOVEMBER 11, 1988 AND REVISOR BY THE PENNSYLVANIA PLANNING COMMISSION ON NOVEMBER 11, 1988.
4. THE ORIGINAL PLAN OF SUBDIVISION WAS APPROVED BY THE TOWNSHIP SUPERVISORS ON NOVEMBER 11, 1988 AND REVISOR BY THE PENNSYLVANIA PLANNING COMMISSION ON NOVEMBER 11, 1988.
5. THE ORIGINAL PLAN OF SUBDIVISION WAS APPROVED BY THE TOWNSHIP SUPERVISORS ON NOVEMBER 11, 1988 AND REVISOR BY THE PENNSYLVANIA PLANNING COMMISSION ON NOVEMBER 11, 1988.
6. THE ORIGINAL PLAN OF SUBDIVISION WAS APPROVED BY THE TOWNSHIP SUPERVISORS ON NOVEMBER 11, 1988 AND REVISOR BY THE PENNSYLVANIA PLANNING COMMISSION ON NOVEMBER 11, 1988.
7. THE ORIGINAL PLAN OF SUBDIVISION WAS APPROVED BY THE TOWNSHIP SUPERVISORS ON NOVEMBER 11, 1988 AND REVISOR BY THE PENNSYLVANIA PLANNING COMMISSION ON NOVEMBER 11, 1988.
8. THE ORIGINAL PLAN OF SUBDIVISION WAS APPROVED BY THE TOWNSHIP SUPERVISORS ON NOVEMBER 11, 1988 AND REVISOR BY THE PENNSYLVANIA PLANNING COMMISSION ON NOVEMBER 11, 1988.
9. THE ORIGINAL PLAN OF SUBDIVISION WAS APPROVED BY THE TOWNSHIP SUPERVISORS ON NOVEMBER 11, 1988 AND REVISOR BY THE PENNSYLVANIA PLANNING COMMISSION ON NOVEMBER 11, 1988.
10. THE ORIGINAL PLAN OF SUBDIVISION WAS APPROVED BY THE TOWNSHIP SUPERVISORS ON NOVEMBER 11, 1988 AND REVISOR BY THE PENNSYLVANIA PLANNING COMMISSION ON NOVEMBER 11, 1988.



STATEMENT OF WORK
I, the undersigned, being duly sworn, depose and say that the foregoing is a true and correct copy of the original plan of subdivision as approved by the Township Supervisors on November 11, 1988 and as revised by the Pennsylvania Planning Commission on November 11, 1988.

STATEMENT OF WORK
I, the undersigned, being duly sworn, depose and say that the foregoing is a true and correct copy of the original plan of subdivision as approved by the Township Supervisors on November 11, 1988 and as revised by the Pennsylvania Planning Commission on November 11, 1988.

STATEMENT OF WORK
I, the undersigned, being duly sworn, depose and say that the foregoing is a true and correct copy of the original plan of subdivision as approved by the Township Supervisors on November 11, 1988 and as revised by the Pennsylvania Planning Commission on November 11, 1988.

APPROVED BY THE TOWNSHIP SUPERVISORS
TODD TOWNSHIP
PENNSYLVANIA
MAY 2, 1989



APPROVED BY THE TOWNSHIP SUPERVISORS
TODD TOWNSHIP
PENNSYLVANIA
MAY 2, 1989

