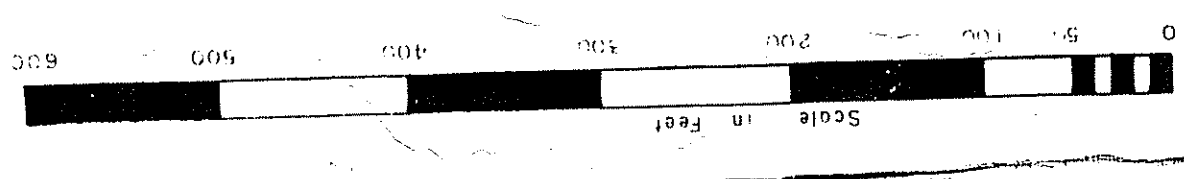


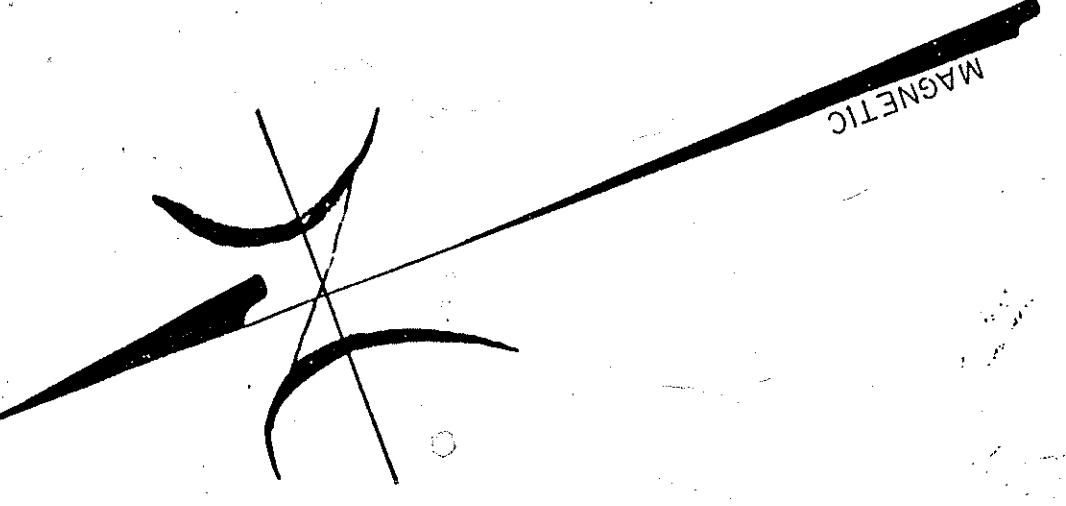
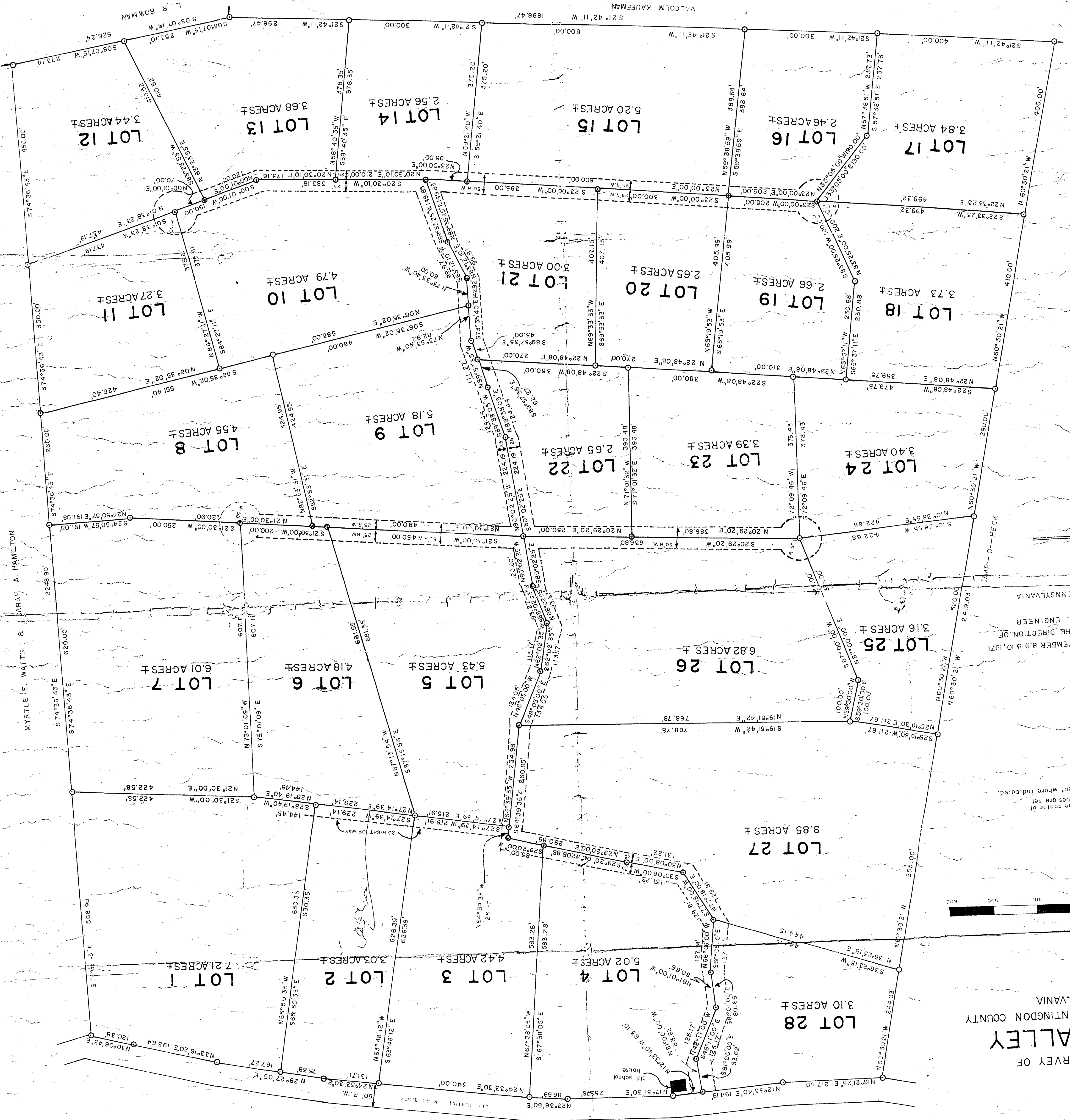
PLAT & SURVEY OF
SMITH VALLEY
 CASS TOWNSHIP HUNTINGDON COUNTY
 PENNSYLVANIA

Note: All corners that fall in the center of
 the 50' right-of-way, the pipes are set
 back 25' in lot lines, except where indicated.



SUBMITTED ON DATES OF NOVEMBER 8, 9 & 10, 1971
 BY ALLEN G. GLENN UNDER THE DIRECTION OF
 A. M. LARSEN, PROFESSIONAL ENGINEER
 REG. NO. 4986
 MCCONNELLSBURG, PENNSYLVANIA

LEGEND
 ○ = Point
 ⊙ = Pipe



MYRTLE E. WATTS &
 SARAH A. HAMILTON

MALCOLM KAUFFMAN

L. R. BOWMAN