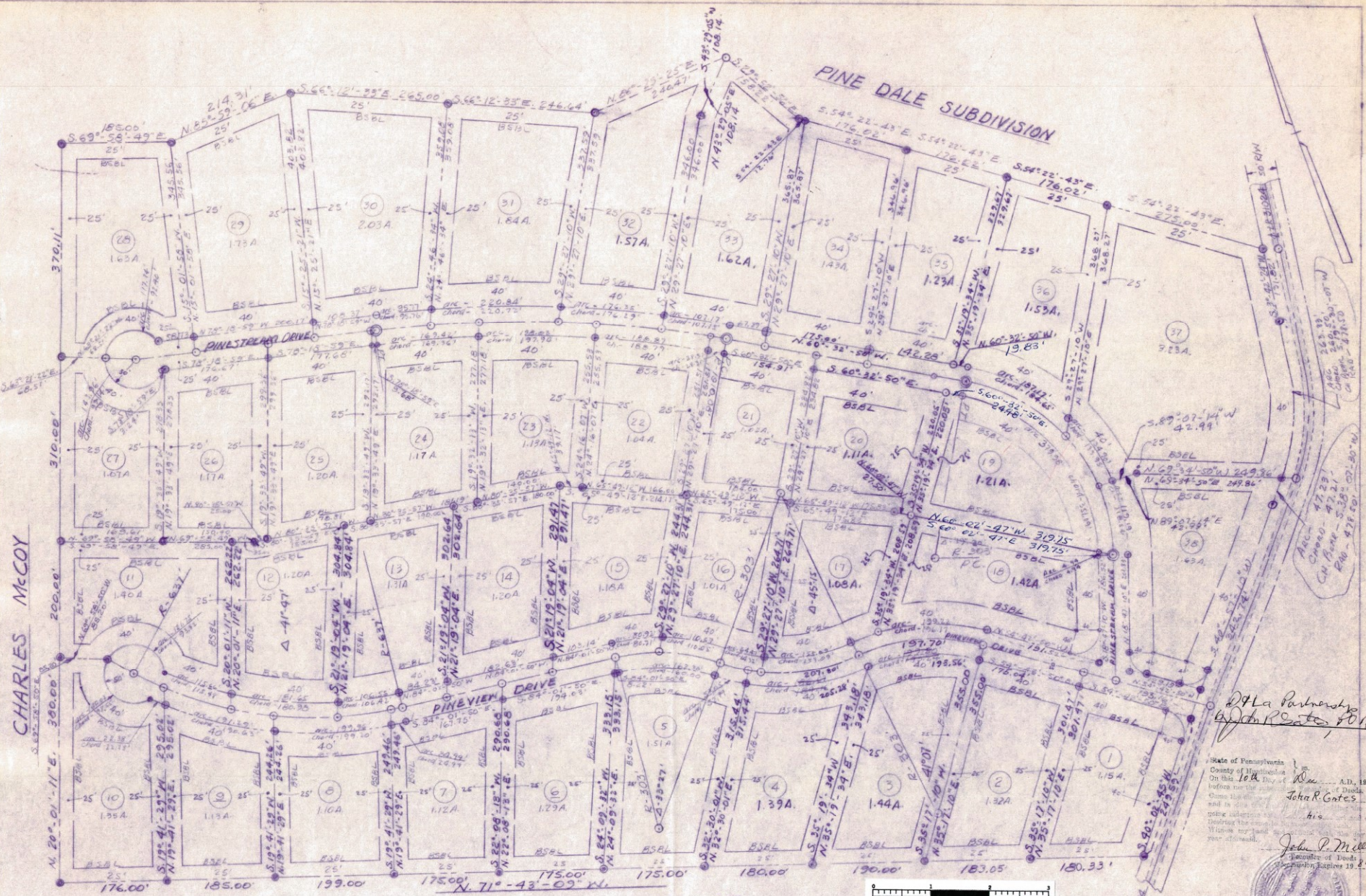


PINE DALE SUBDIVISION

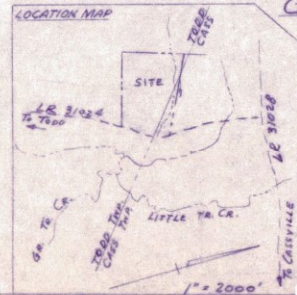


CHARLES MCCOY

DPL Partnership
John R. Gates, P.O.A.

State of Pennsylvania
County of Huntingdon
On this 16th day of June, A.D. 1982
I, John R. Gates, County Clerk
do hereby certify that this is a true and correct copy of the original as filed in my office.
John P. Miller
Secretary of Deeds
Huntingdon County, Pennsylvania 16831

- LEGEND**
- AREA - WOODED (GENERALLY)
 - SOIL - MORRISON (B&D)
SANDY LOAM &
CHANNERY SOIL
 - PROPERTY & RW LINE ————
 - CENTER LINE ————
 - BUILDING SETBACK LINES — BSBL ————
 - RADIUS — R ————
 - RIGHT OF WAY — RW ————
 - IRON PIPE ————



GAIL SAYLOR
Approved:
Todd Township Supervisors
by *John M. Saylor*
Blair Stewart
Blair Stewart
TODD TOWNSHIP SUPERVISORS

REVISION NO. 1 - SET LINES
8 AREAS FOR LOT NOS.
3, 4, 17, 18, 19, 20, 35 & 36
SEPT. 29, 1982.

SEE SHEET NO. 2 OF FOR CONTOURS, STORM DRAINAGE AND EROSION CONTROL.
SEE SHEET NO. 3 OF FOR PROFILE AND GRADE LINE FOR STREETS, NAMED
A 15' WIDE EASEMENT ON EACH SIDE OF 50' WIDE RIGHT OF WAY IS RESERVED FOR UTILITIES.

FIELD DATA AND PLAN PREPARATION
BY G. & S. SURVEYS, 220 N. 2ND ST.
MCCONNELLSBURG, PA., 17233.
BY A. M. [Signature], PE & PLS.
6-5-82

SHEET NO. 10 OF 3 PLAT NO. G-299
PINE STREAM SUBDIVISION
OWNER: D & L, 305 PENN. ST., HUNTINGDON, PENNA. 16632
PROPOSED SUBDIVISION,
SITUATE IN TODD TOWNSHIP,
HUNTINGDON COUNTY, PENNA.
about 60 acres
Scale: 1"=100' Date: June 5, 1982
CREATED BY D&L & DMS

For Restrictions See:
Misc. Book 113, page 809

1982
#100578

Plan Book 5, page 78